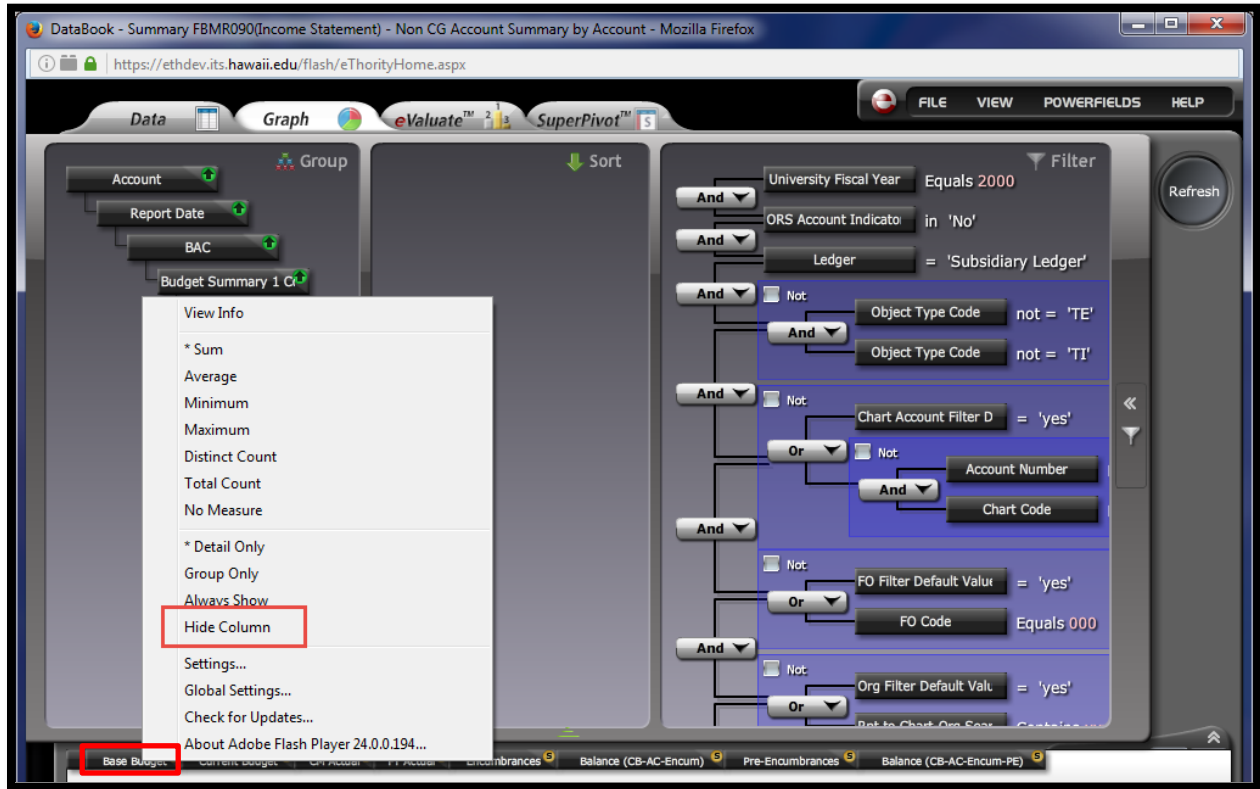


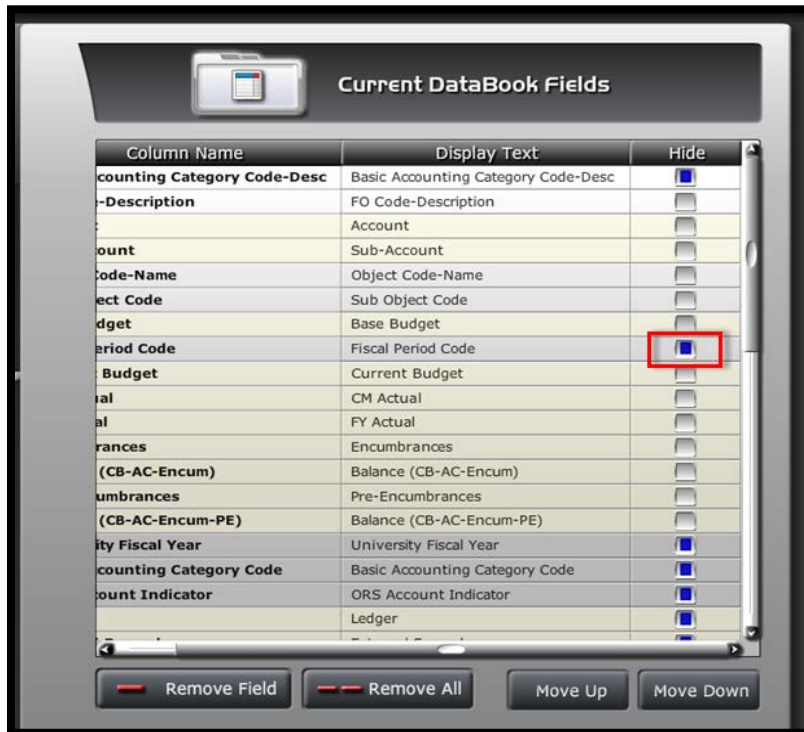
New Features in eThORITY v7.2

1. Hiding a column in a databook directly from the column heading.

- Right click on the desired column and select *Hide Column* from the menu. Column will be hidden from view.

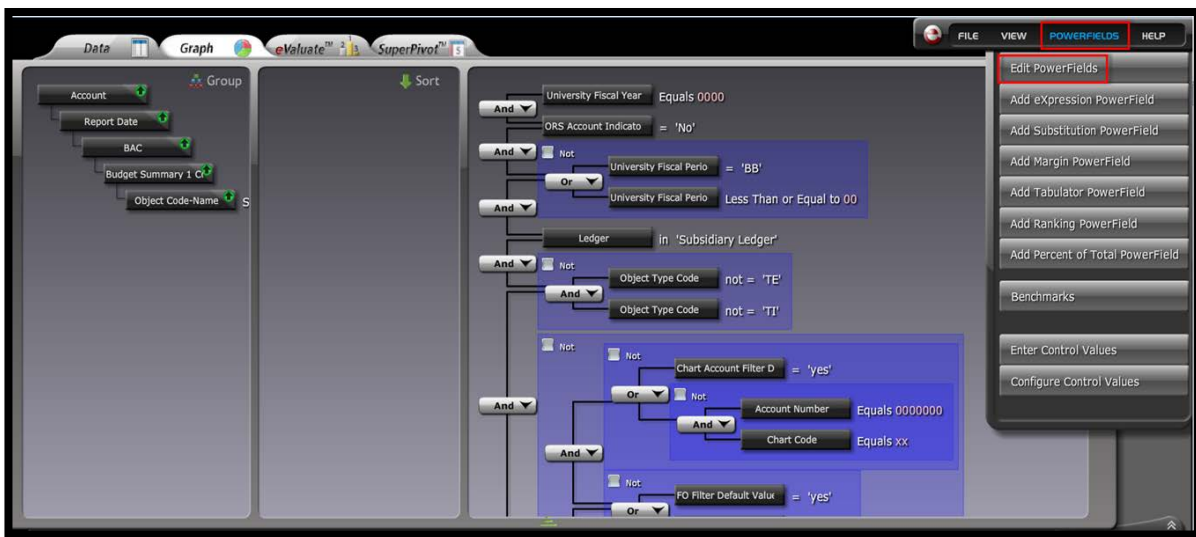


- To un-hide the column, go to *View>Field Selector* and remove blue square in the hide column.

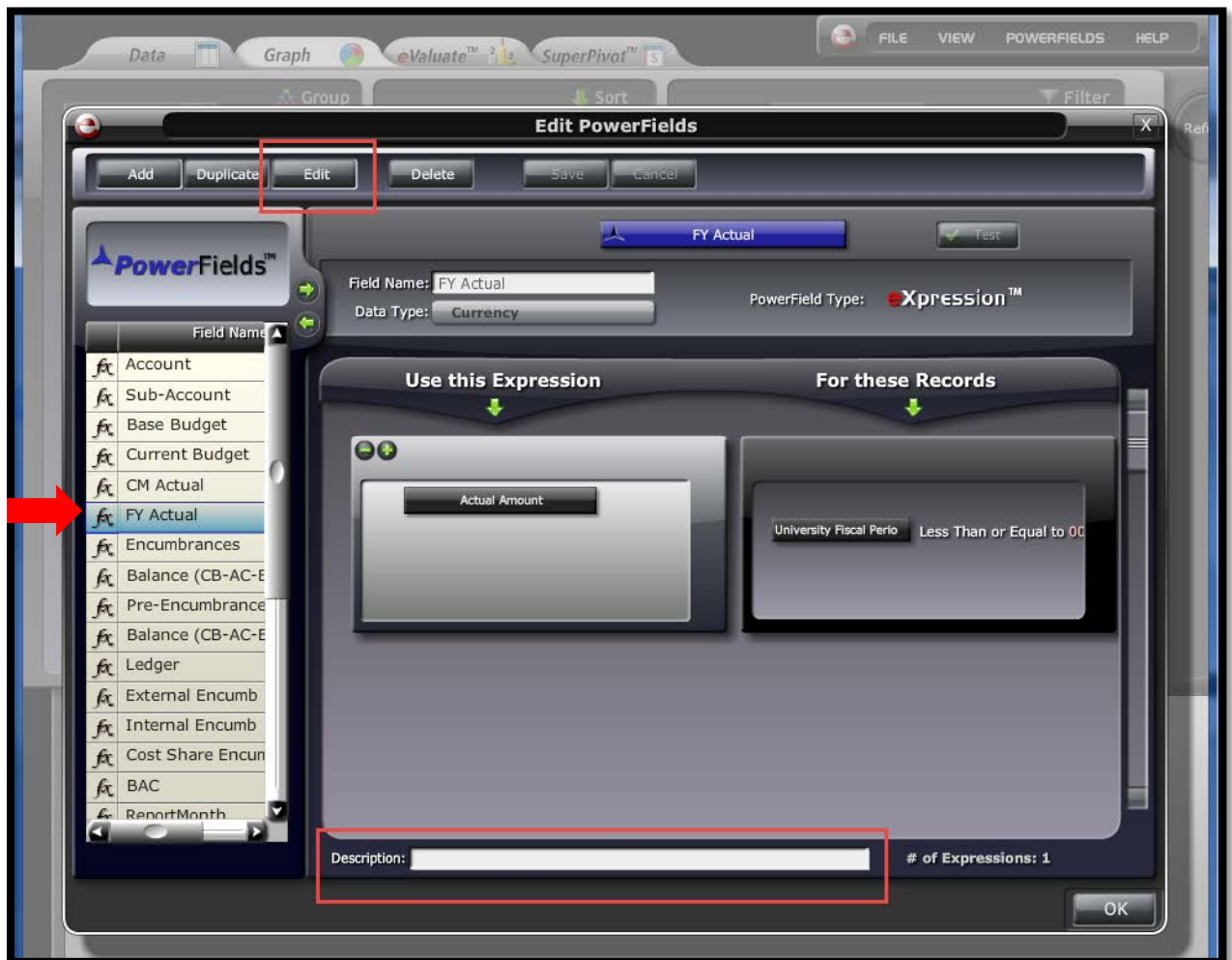


2. Adding a description to a powerfield.

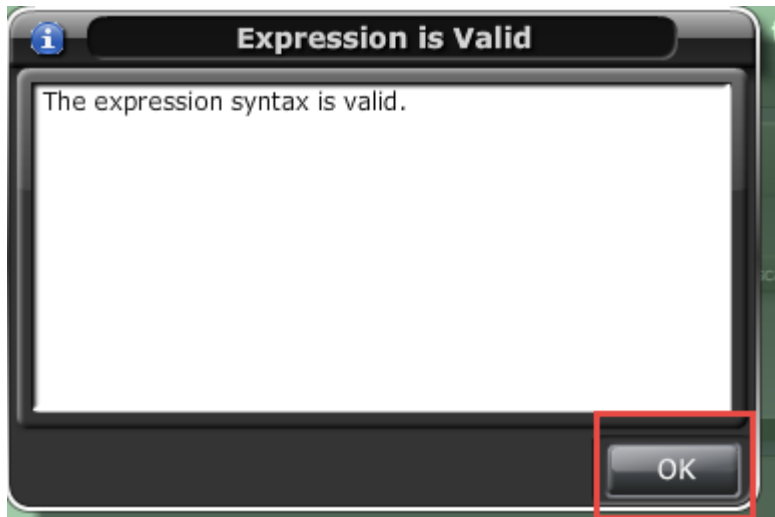
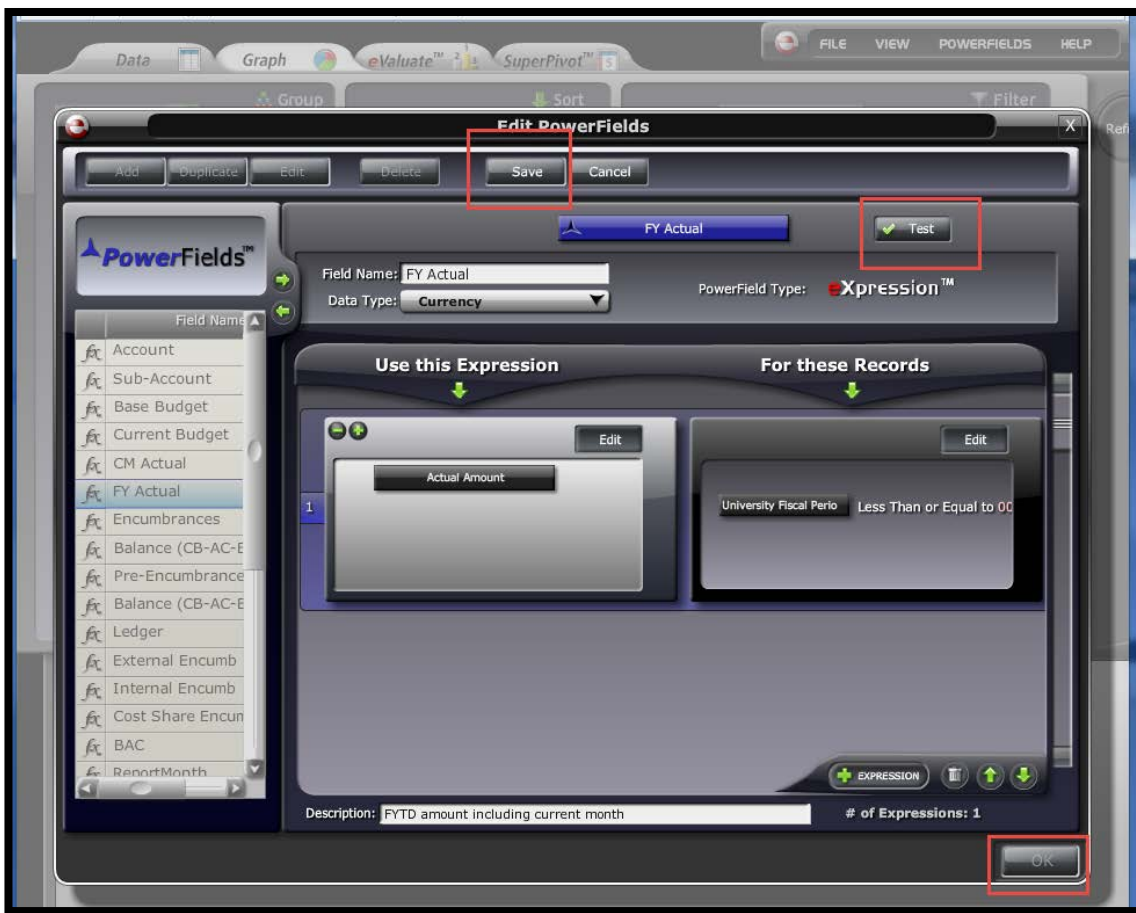
- Go to *POWERFIELDS*, then click *Edit PowerFields*.



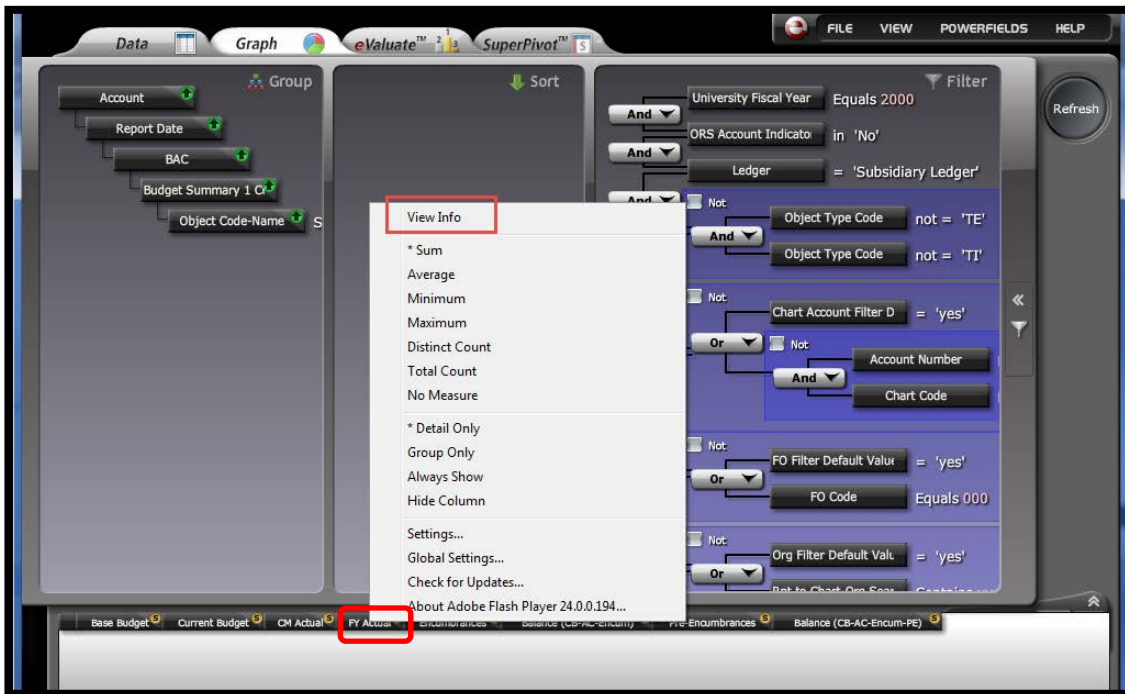
- Pop-up window will open. Select desired powerfield from left panel, then click *Edit* at top of window. Go to *Description* field at the bottom of the window and enter desired text.



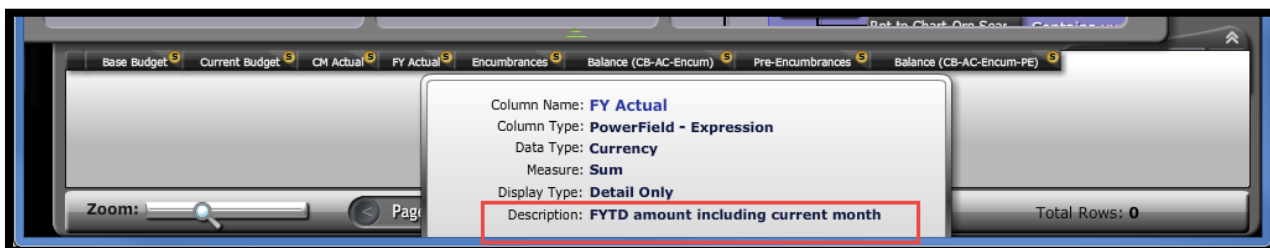
- Click *Test* in *Edit PowerFields* window. Once 'the expression syntax is valid' message is received click on *ok* in the 'Expression is Valid' box. Now click on *save* in the 'Edit Powerfields' box to save the powerfield. Finally click *ok* then save the databook itself to assure that newly added description has been successfully recorded.



- To view the description of the powerfield, right click the applicable databook column heading and then select *View Info* from the menu.

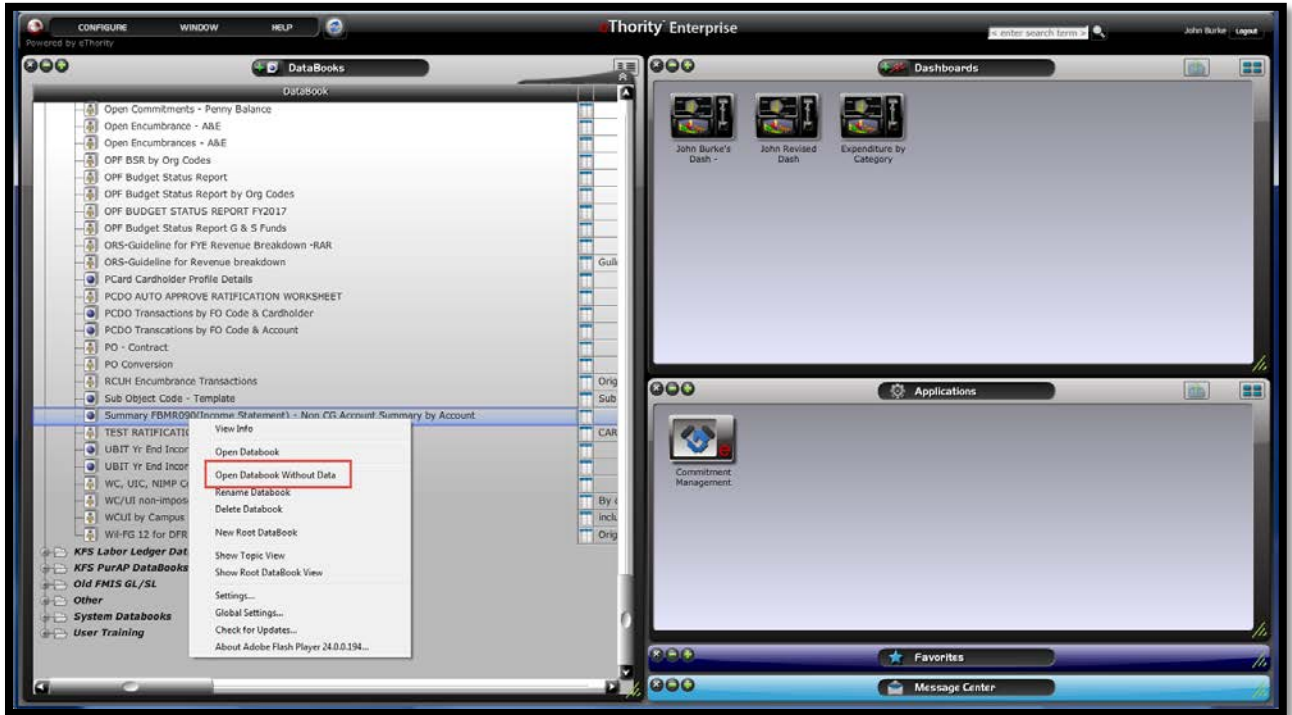


- A pop-up window will open displaying properties for the pertinent powerfield, including the description. To close the pop-up, simply click inside it.



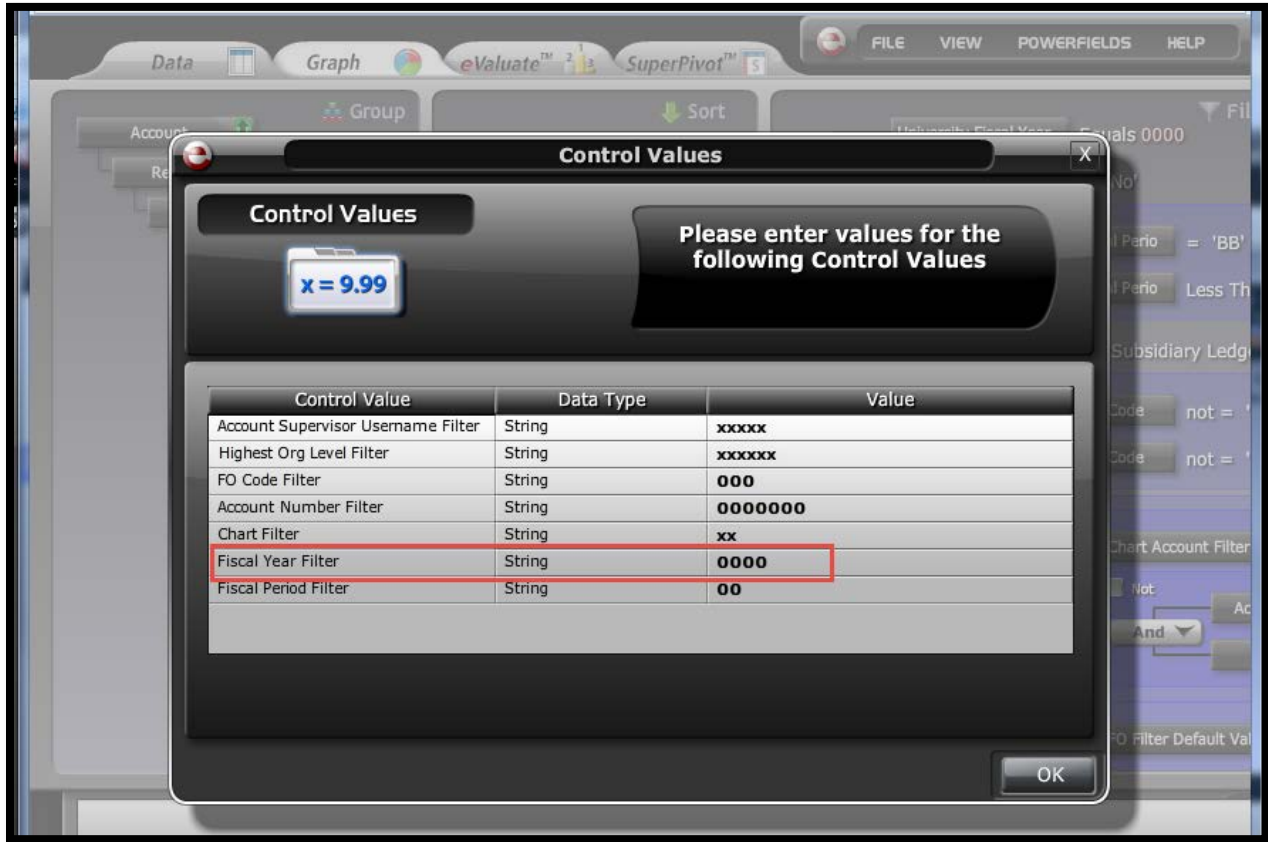
3. Opening databooks via *Open Databook Without Data* feature.

- Right click on the pertinent databook and select *Open Databook Without Data* from the menu. This will allow the user to change search filter criteria *before* running the databook.

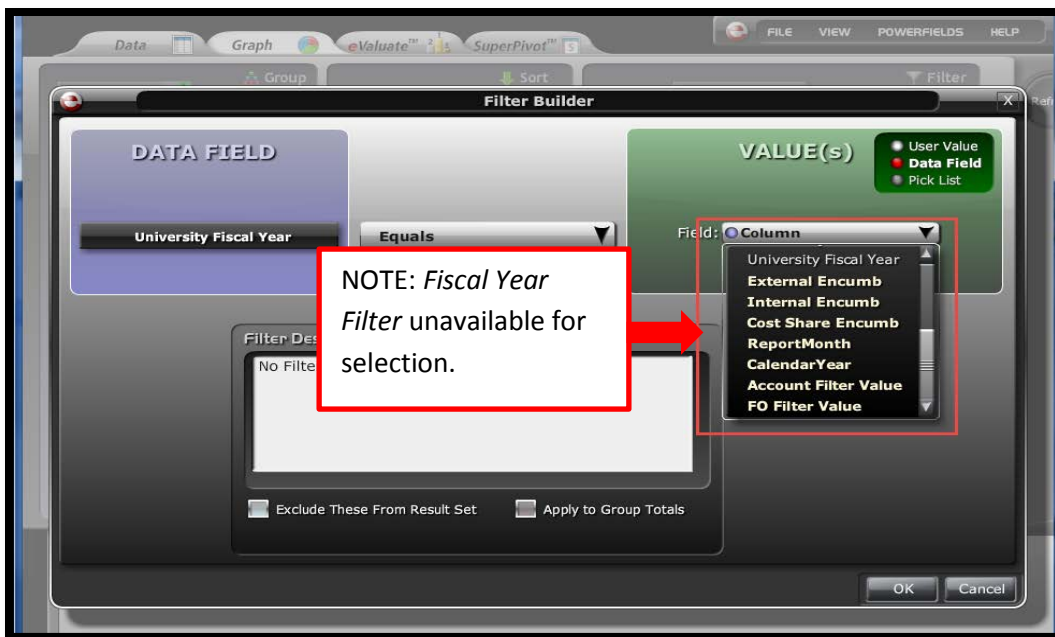


4. Validation of data type when assigning control values.

- When user attempts to assign a control value in the filter, the system now checks the control value data type against what is defined in the database.



- If no match is found, the control value will not be displayed and cannot be selected.
- User should change the data type in the control value to one that matches the database.



- Currently 'Fiscal Year Filter' has been identified as having this issue. This only occurs when trying to assign or re-assign the control value. If the control value is currently assigned there should be no issue.
- If you run into this situation contact John Burke at john25@hawaii.edu for assistance.